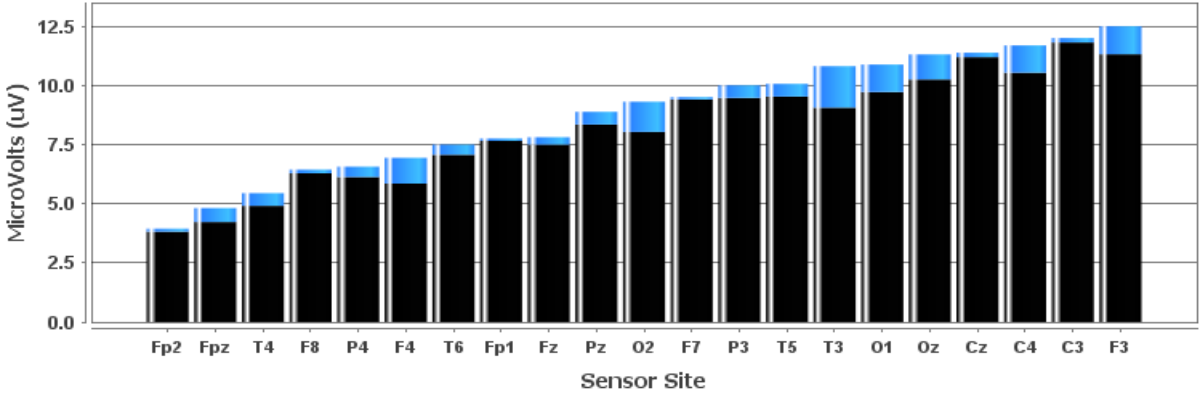
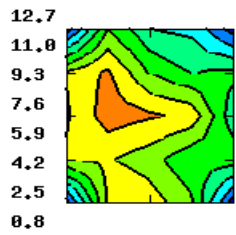


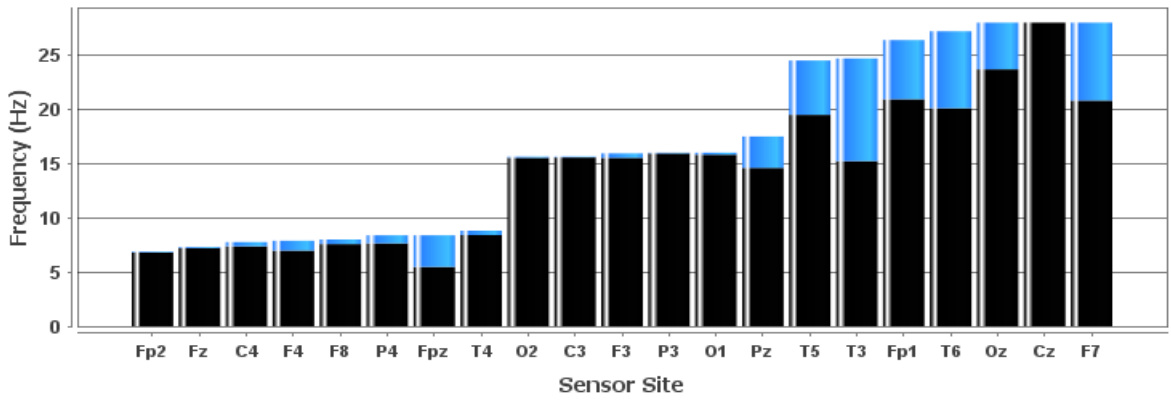
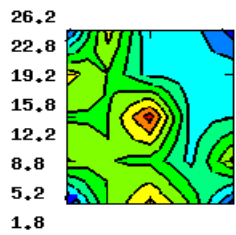
Mean Total Amplitude

MicroVolts



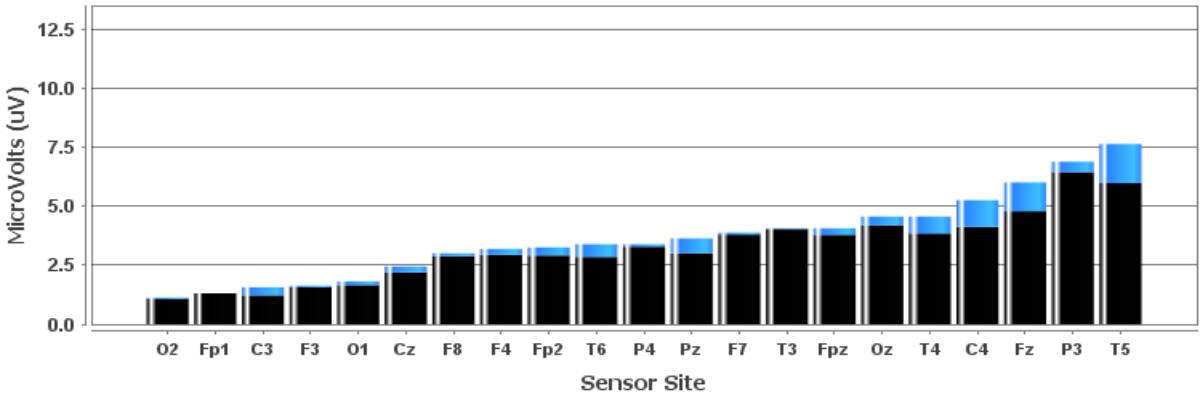
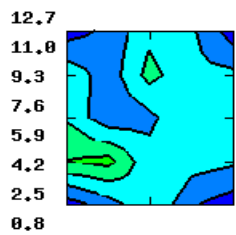
Mean Dominant Frequency

Frequency



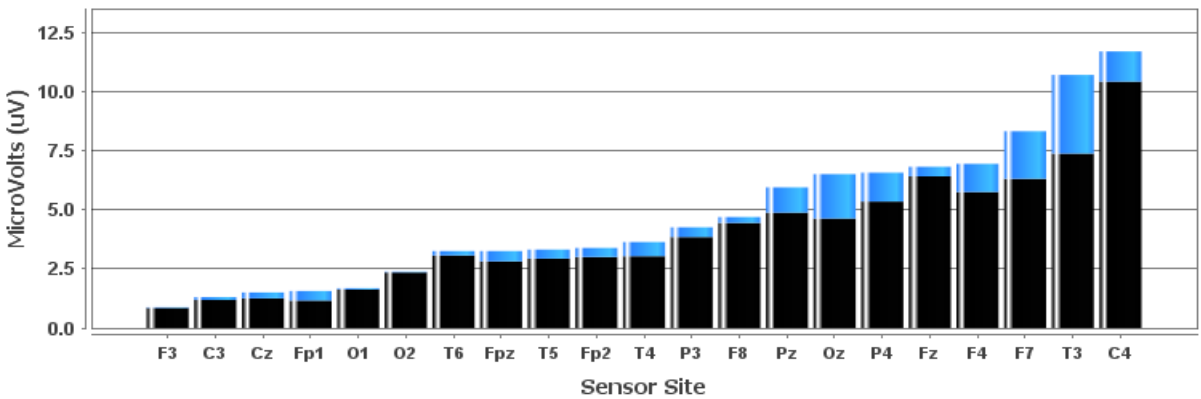
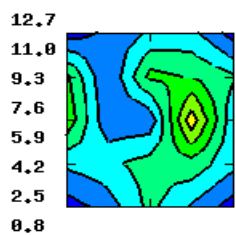
Mean Delta Amplitude

MicroVolts

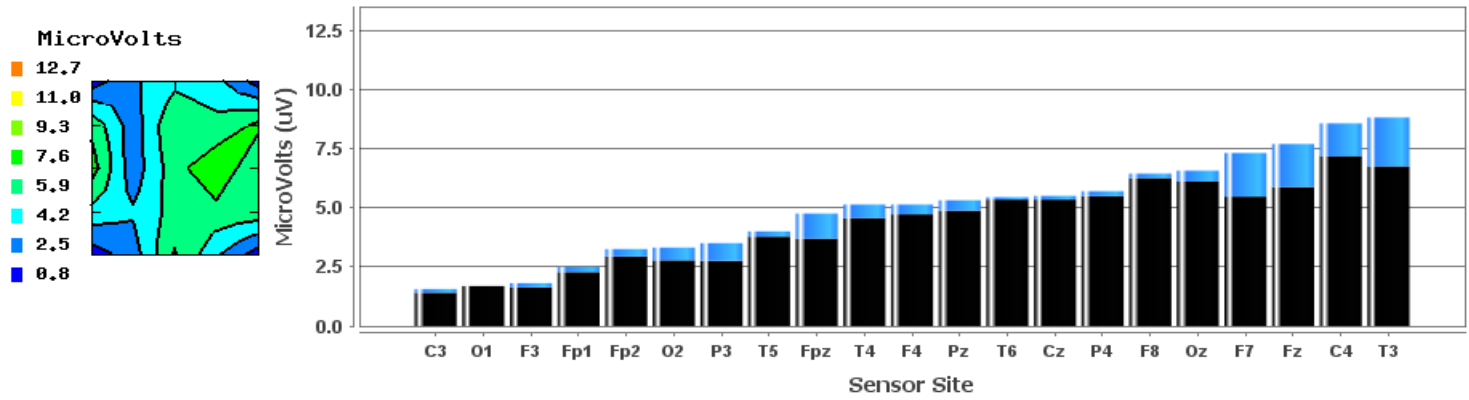


Mean Theta Amplitude

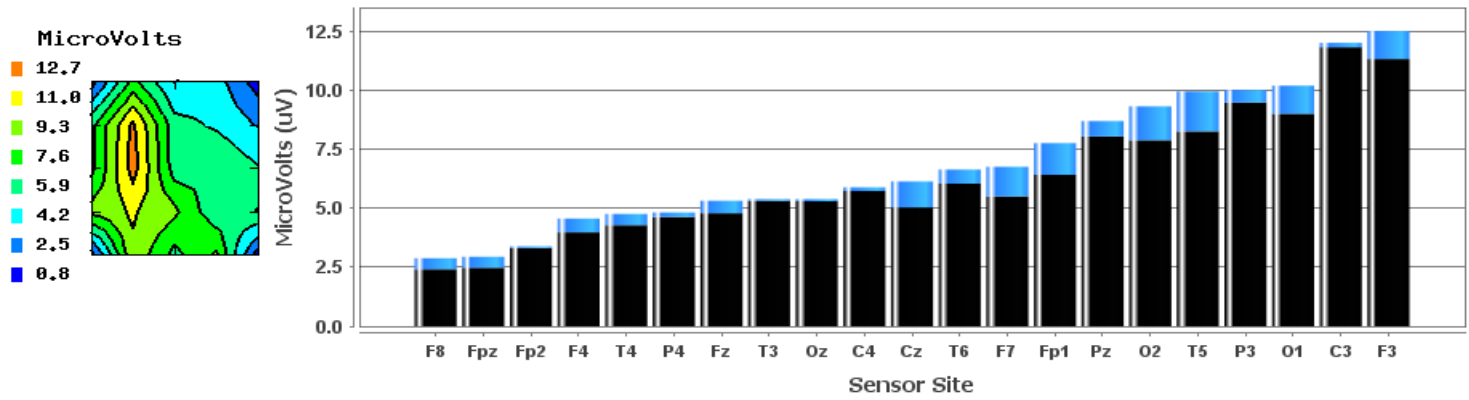
MicroVolts



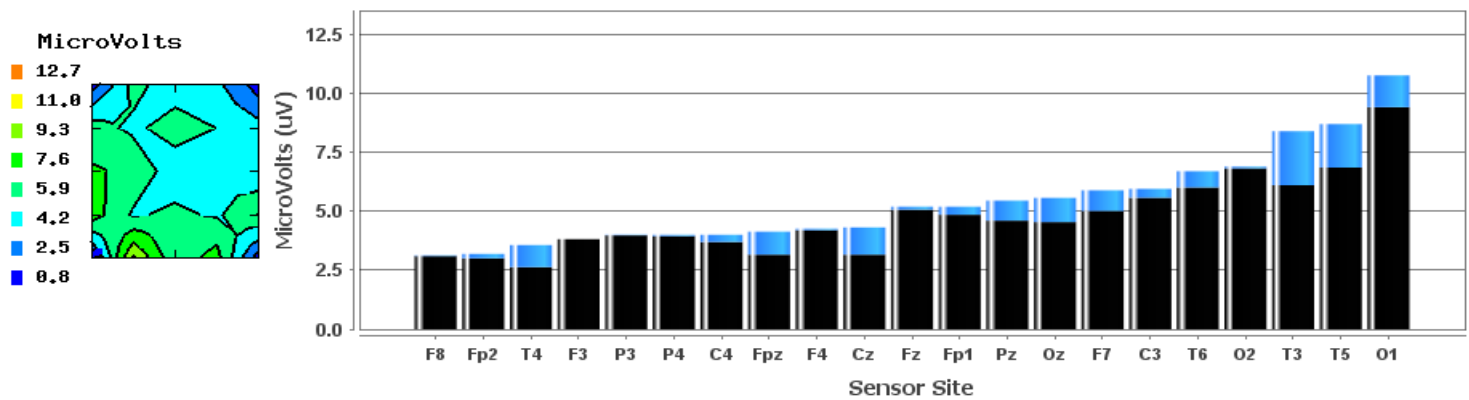
Mean Alpha Amplitude



Mean Lo Beta Amplitude



Mean Beta Amplitude



Mean Hi Beta Amplitude

